

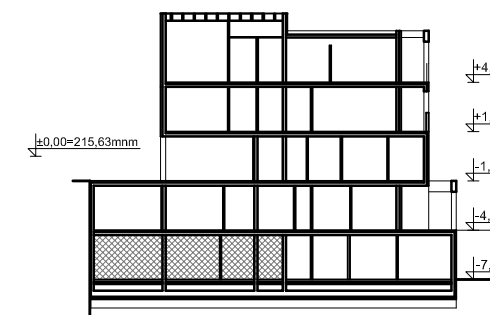
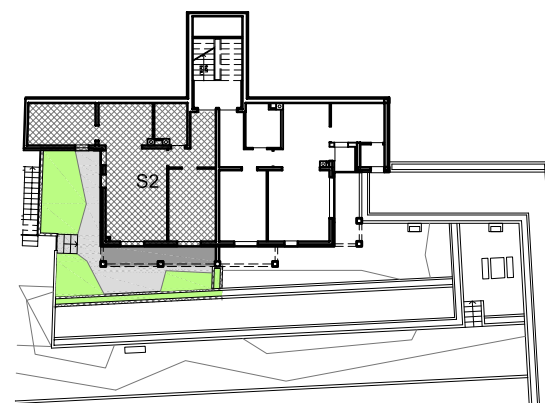
SITUACIJA

0 5 10 20 30 40 50m

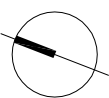
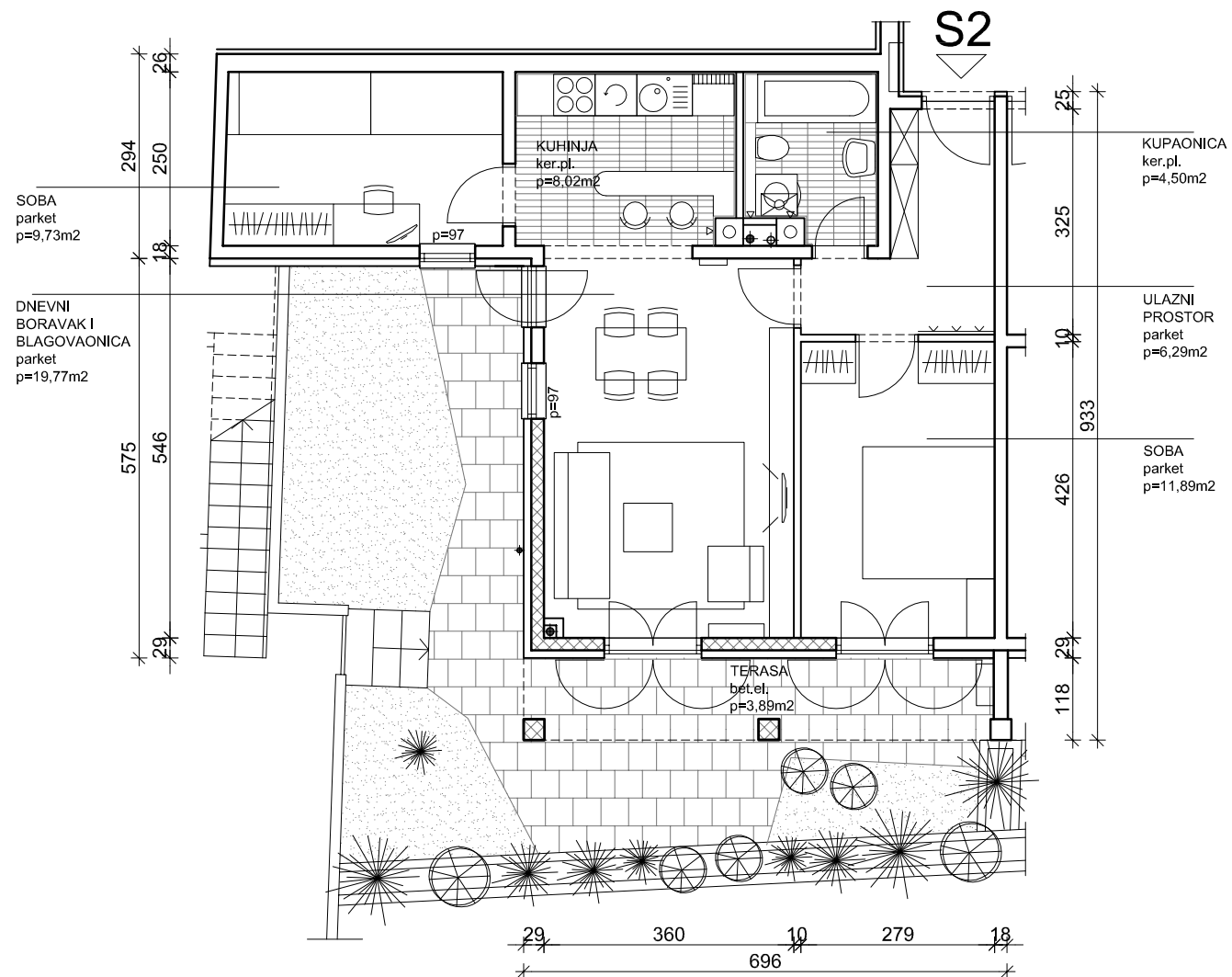
Z4-1
PODRUM :
STAN S2
P=75,59m²

PODRUM = razina -7,25 m

PRESJEK



1138
 18 395 18 318 10 194 18 150 18



0 1 2 5m

iskaz površina	podrum	trosojni stan	Z41-S2
prostorija	netto površina	netto komercijalna površina	m2
ulazni prostor	6,29	6,29	m2
kupaonica	4,50	4,50	m2
soba	11,89	11,89	m2
dnevni boravak i blagovaonica	19,77	19,77	m2
kuhinja	8,02	8,02	m2
soba	9,73	9,73	m2
terasa (0,5)	7,79	3,89	m2
UKUPNO:	67,99	64,09	m2
spremište 2 (0,5)	5,67	2,84	m2
terasa-nenatkrivena (0,25)	14,83	3,71	m2
vrt - prohodan (0,25)	19,82	4,95	m2
vrt - neprohodan (0,00)	6,75	0,00	m2
UKUPNO:	47,07	11,5	m2
SVEUKUPNO Z41-S2:	115,06	75,59	m2