

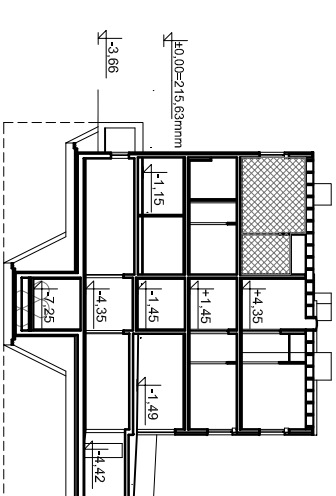
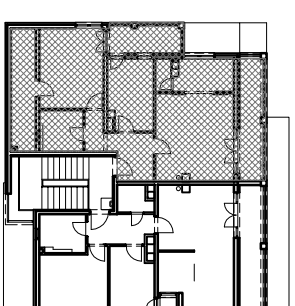
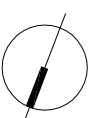
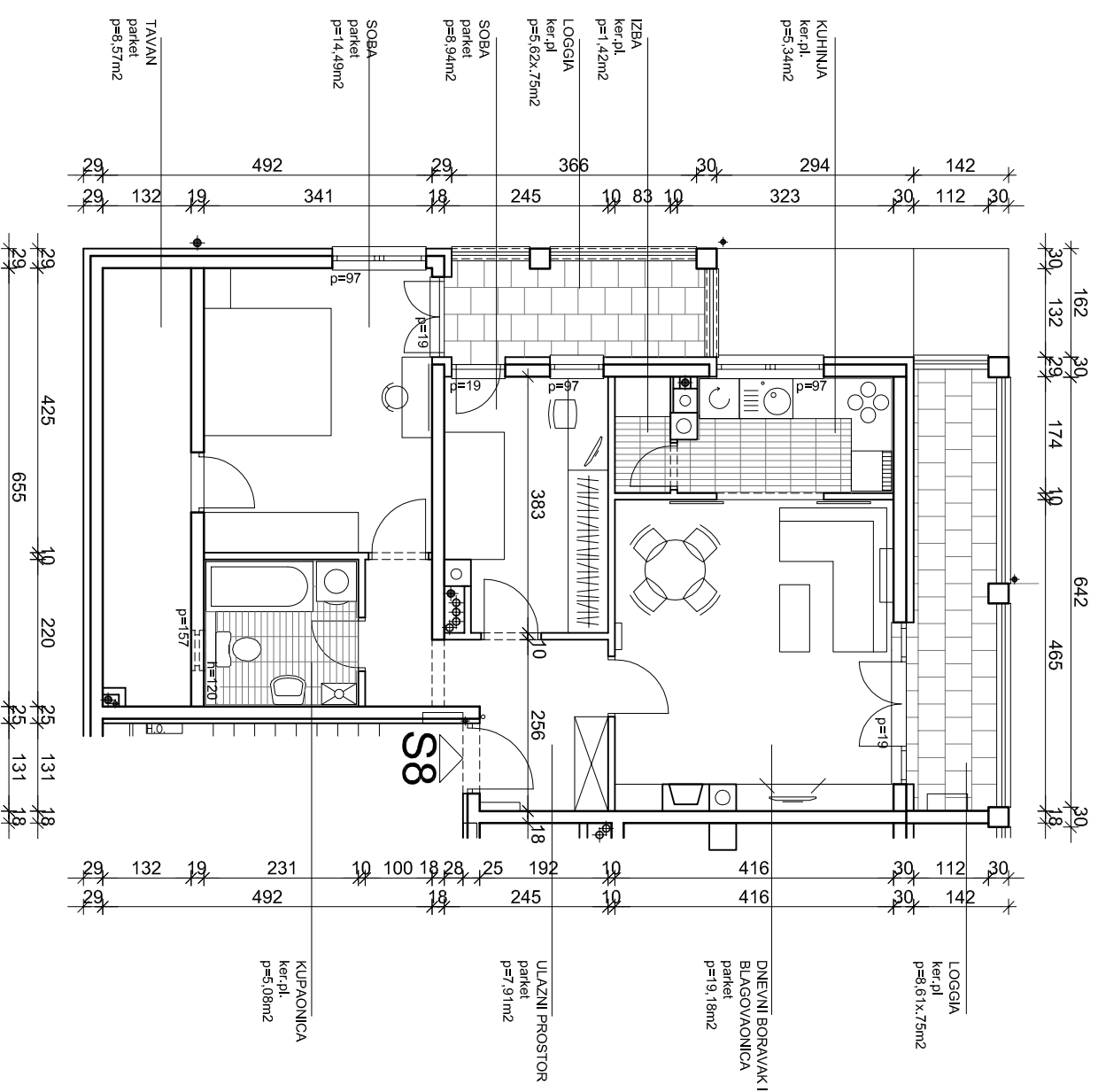
SITUACIJA

0 5 10 20 30 40 50m

Z4-1
POTKROVLJE :
STAN S8
P=70,00m²

POTKROVLJE = razina +4,35 m

PRESJEK



iskaz površina		potkrovlje		dvoipolsobni stan		Z41-S8	
prostorija	netto površina	netto površina	netto komercijalna površina				
ulazni prostor	7,91	7,91	7,91	m2			
kupaonica	5,08	5,08	5,08	m2			
soba	14,49	14,49	14,49	m2			
soba	8,94	8,94	8,94	m2			
dnevni boravak i blagovaonica	19,18	19,18	19,18	m2			
kuhinja	5,34	5,34	5,34	m2			
izba	1,42	1,42	1,42	m2			
loggia (0,75)	5,62	5,62	4,21	m2			
loggia (0,75)	8,61	8,61	6,45	m2			
tavan (0,00)	8,57	8,57	0,00	m2			
UKUPNO:	80,08	80,08	67,94	m2			
spremište 8 (0,5)	4,12	4,12	2,06	m2			
SVEUKUPNO Z41-S8:	84,20	84,20	70,00	m2			

investitor: SGZ STANOGRAD, Illica 109, Zagreb

STAMBENA GRADEVINA Z4-1
 Sveti Duh, k.č. 1146/13 k.o. Črnomerec, Zagreb