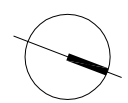
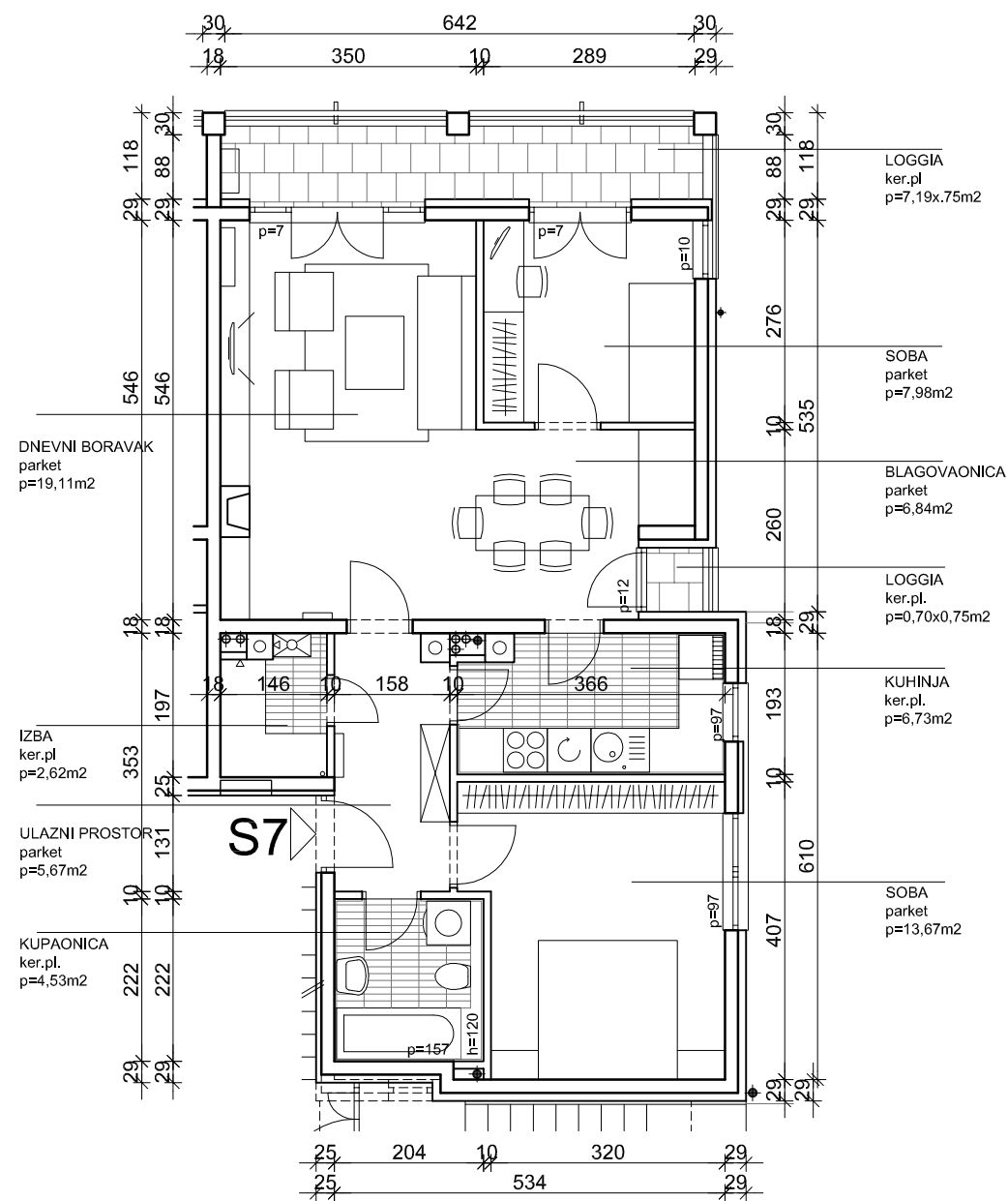
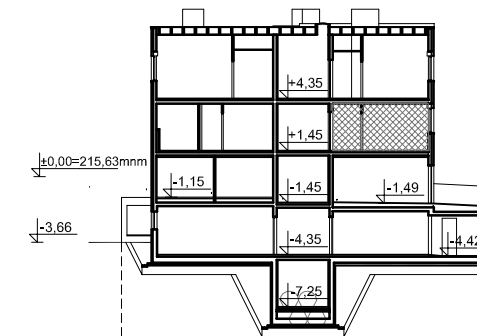
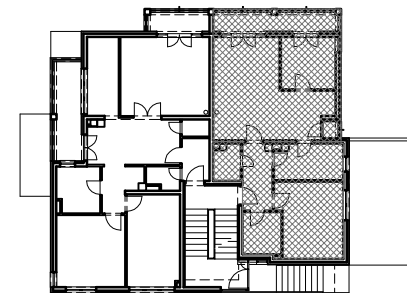


SITUACIJA

Z4-1
2.KAT :
STAN S7
P=75,21m²

2.KAT = razina +1,45 m

PRESJEK



iskaz površina	2.kat	dvoipolsobni stan	Z41-S7
prostorija	netto površina	netto komercijalna površina	m ²
ulazni prostor	5,67	5,67	m ²
izba	2,62	2,62	m ²
kupaonica	4,53	4,53	m ²
soba	13,67	13,67	m ²
kuhinja	6,73	6,73	m ²
soba	7,98	7,98	m ²
blagovaonica	6,84	6,84	m ²
dnevni boravak	19,11	19,11	m ²
loggia (0,75)	7,19	5,39	m ²
loggia (0,75)	0,70	0,52	m ²
UKUPNO:	75,04	73,06	m²
spremište 7 (0,5)	4,30	2,15	m ²
SVEUKUPNO Z41-S7:	79,34	75,21	m²