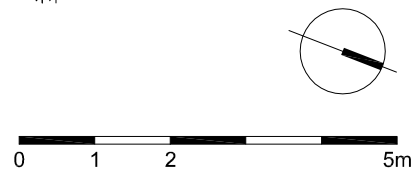
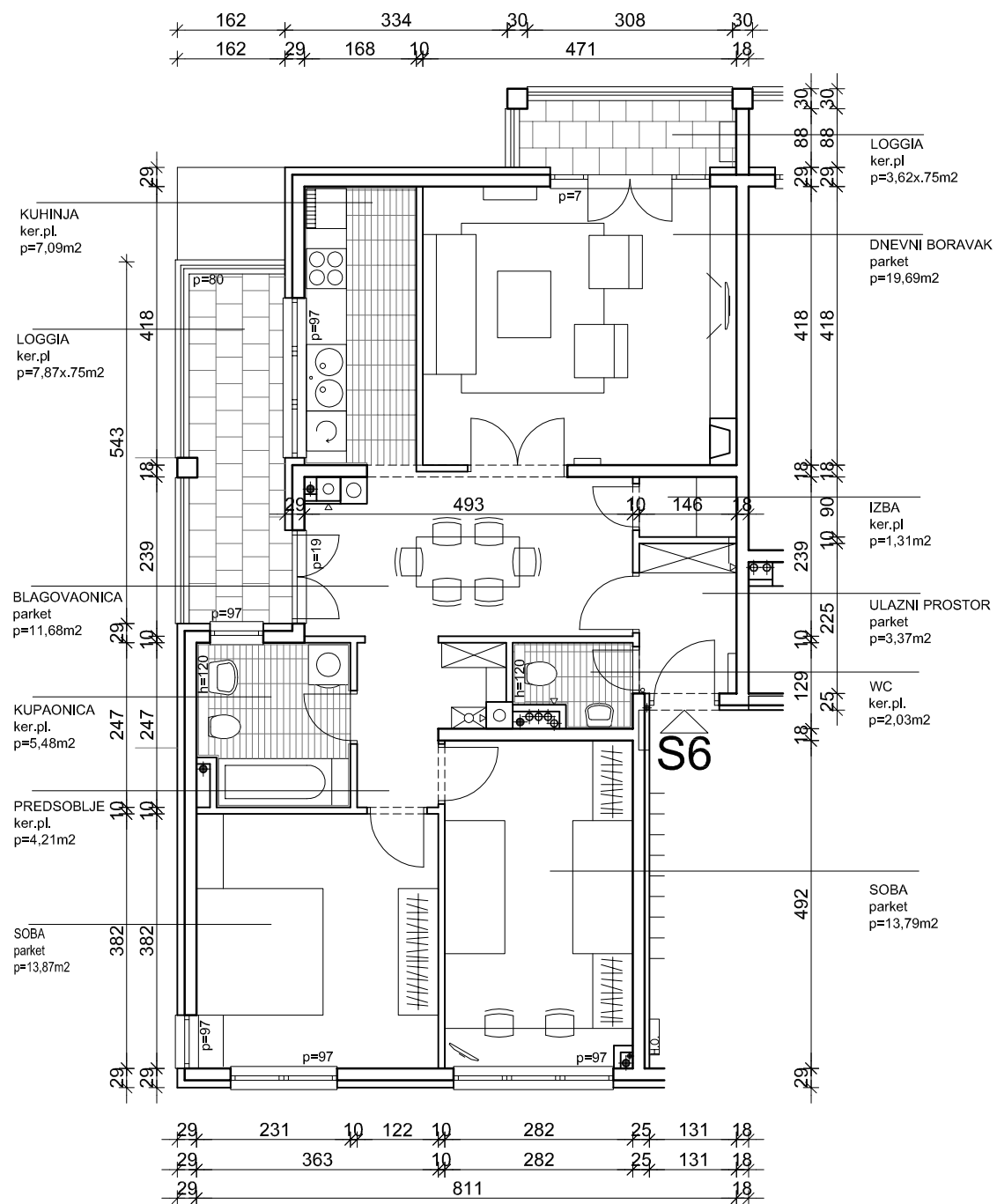
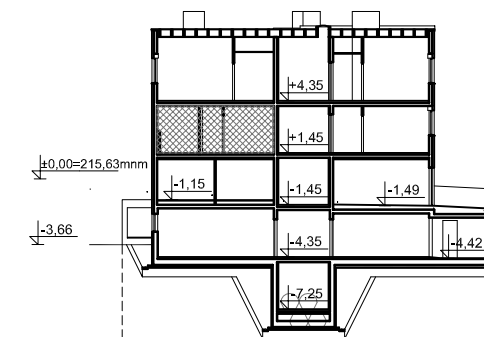
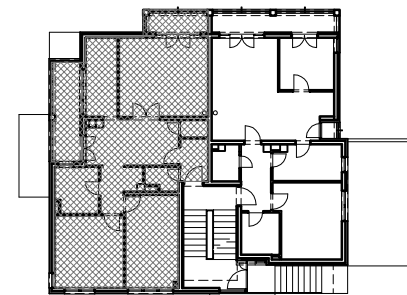


SITUACIJA

Z4-1
2.KAT :
STAN S6
P=93,24m²

2.KAT = razina +1,45 m

PRESJEK



iskaz površina	2.kat	trosojni stan	Z41-S6
prostorija	neto površina	neto komercijalna površina	m ²
ulazni prostor	3,37	3,37	m ²
wc	2,03	2,03	m ²
izba	1,31	1,31	m ²
blagovaonica	11,68	11,68	m ²
dnevni boravak	19,69	19,69	m ²
predsoblje	4,21	4,21	m ²
kupaonica	5,48	5,48	m ²
soba	13,87	13,87	m ²
soba	13,79	13,79	m ²
kuhinja	7,09	7,09	m ²
loggia (0,75)	7,87	5,90	m ²
loggia (0,75)	3,62	2,71	m ²
UKUPNO:	94,01	91,13	m²
spremište 6 (0,5)	4,21	2,11	m ²
SVEUKUPNO Z41-S6:	98,22	93,24	m²